

A Roadmap to Integrate Telemedicine as Part of Innovative Care for Psoriasis



Telemedicine (TM) enables the remote delivery of healthcare services via telecommunication technologies

The International Psoriasis Council (IPC) sought to establish a roadmap for implementing TM in psoriasis diagnosis and management

A working group of experts installed by the IPC



Identified issues related to psoriasis and TM



Formulated statements



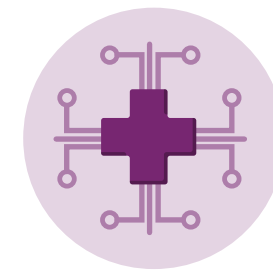
Voted to arrive at a consensus

36 global consensus statements



Tools employed in Teledermatology evaluation

- Include artificial intelligence
- Psoriasis Area and Severity Index
- Medical photography



Teledermatology definition and strategies

- Digital photos
- Video conferencing
- Hybrid TM



Advantages

- Cost-effective
- Early intervention
- Ease-of-access



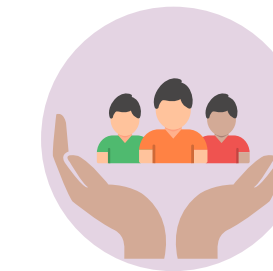
Limitations

- Whole body skin examination is difficult
- Online inspection of sensitive body parts creates discomfort



Barriers to implementation

- Security risk and privacy concerns
- Sociodemographic and cultural rejection
- Poor reimbursement policies



Care for underserved sections

- Increase access for medically disadvantaged populations
- Adjust practices as per the healthcare system and cultural views

IPC encourages forum discussions and collaborative efforts with international organizations to share best practices that assist in the integration of TM in psoriasis care and management